



**PROJET LIMPOPO**  
**MISSION EXPLORATOIRE**  
**16 JUIN - 1<sup>ER</sup> JUILLET 2005**

*Rapport provisoire*



**PROJET LIMPOPO**  
**MISSION EXPLORATOIRE**  
**16 JUIN - 1<sup>ER</sup> JUILLET 2005**

---

*Rapport provisoire*

---

Philippe Chardonnet

Les opinions émises dans ce rapport sont celles de l'auteur et n'engagent ni le bailleur de fonds, ni le maître d'ouvrage, ni le maître d'œuvre, ni les opérateurs, ni les autorités.



# SOMMAIRE

**Remerciements**

**Abréviations**

## **I. OBJECTIFS DE LA MISSION**

**1. Termes de référence**

**2. Carte de situation**

## **II. CONDUITE DE LA MISSION**

**1. Liste des personnes rencontrées**

**2. Programme de la mission**

## **III. RESULTATS**

**1. Carte de situation du projet Limpopo**

**2. Comparaison des sites**

**3. Compte-rendu des experts**

**4. Conclusion de la mission**

**ANNEXES**

## REMERCIEMENTS

Sont vivement remerciées ici toutes les nombreuses personnes qui ont bien voulu accueillir la mission exploratoire au Mozambique, qu'elles relèvent du secteur public, du secteur privé ou du secteur associatif.

Des mentions particulières doivent être adressées au Ministère du Tourisme, notamment au projet TFCA, mais aussi aux autorités de la Province de Gaza, à la Peace Parks Foundation et à bien d'autres. Toutes et tous ont permis à cette mission de conduire ses travaux aussi bien qu'il était possible. La liste des personnes rencontrées figure dans le corps du texte.

## ABRÉVIATIONS

BTB : Bovine Tuberculosis

GLTP : Great Limpopo Transfrontier Park

IGF : International Foundation for the Conservation of Wildlife

IUCN : International Union for the Conservation of Nature

PPF : Peace Parks Foundation

TFCA : Trans Frontier Conservation Area

WWF : World Wildlife Fund

## I. OBJECTIFS DE LA MISSION

### 1. TERMES DE REFERENCE DE LA MISSION EXPLORATOIRE

DEVELOPMENT OF A NEW WILDLIFE ENTERPRISE  
IN THE CHICUALACUALA AREA, *PROVINCIA DE GAZA*, MOZAMBIQUE,  
WITHIN THE GREAT LIMPOPO TRANS FRONTIER CONSERVATION AREA  
  
FEASIBILITY STUDY

#### 1. Background

- Key words:

Mozambique, *Provincia de Gaza*, Chicualacuala area, Great Limpopo TFCA initiative (GLTFCA), Parque Nacional do Limpopo (PNL), Peace Parks Foundation (PPF), community-based natural resource management (CBNRM), conservation of biodiversity, sustainable development, wildlife production, game viewing, game ranching, sustainable hunting, community hunting concession, ecotourism, local communities, private sector.

- Introduction:

The Rothschild Foundation is committed to develop a new wildlife enterprise in the Chicualacuala area, Gaza Province, South-Western Mozambique. This initiative aims at upgrading the wildlife conservation status of the region as well as improving the livelihood of local communities in the area. The enterprise intends to be multifunctional with several wildlife-related activities combined. It plans to encompass a large community hunting concession, a private concession of limited size, as well as other components to be identified by the mission. It will be managed as part of the GLTFCA in relation with the Mozambique authorities, the PNL and the PPF. The Rothschild Foundation has requested IGF to carry out the study. As partner of BioHub, IGF is requesting some technical support to the other BioHub partners.

#### 2. Objectives of the mission

- The general objective of the mission is to study the feasibility of a new wildlife enterprise in the Chicualacuala area, with the intention to contribute to the sustainable development of the region by both conserving wildlife and enhancing local development.
- The specific objectives of the mission are:
  - To study the global context prevailing in the particular area identified, including geographical, human, environmental, wildlife, etc. aspects;
  - To consult local stakeholders in order (i) to understand the local context in terms of livelihood, traditional land tenure, land-uses, etc. (ii) to address people's needs, (iii) to discuss the prospect of a new wildlife enterprise; interviews will be conducted of local authorities, local communities, traditional rulers, operators of the private sector, etc.

- To overview the activities currently carried out in the area, as well as projects planned, with the intention to avoid duplication and overlapping;
- To identify the shape and content of the wildlife enterprise, including technical framework, institutional arrangements, community involvement, cost and benefit, etc., with particular emphasis focused on:
  - (i) developing income-generating wildlife-based activities,
  - (ii) securing adequate relationship between local communities and the private entrepreneur,
  - (iii) creating a large community hunting concession & purchasing a private concession of limited size,
  - (iv) establishing a physical link between Kruger and Gonarezhou NP's via the concession in order to link all three components of the GLTP.
- To assess the feasibility of such a project, in respect to technical, social, economical and financial matters;
- To conduct a risk analysis study including landmine constraints, wildlife health issues, investment risk, global sustainability of the enterprise, etc.

### **3. Methodology**

---

- General approach:
  - The common methods for conducting feasibility studies will be used by the team; specific mentions are made of the following methods:
  - The « Livelihood Assessment » method will be used to establish, during the time period of the mission, a rapid community-based diagnosis of the present socio-economic situation in the area ;
  - The « Private Public Community Partnership » method (PPCP) will be applied during the course of the mission to identify ways and means to establish adequate institutional relationship between stakeholders, especially between the local communities and the private entrepreneur ;
  - Particular attention has to be paid to the ecological sustainability of the wildlife-based activities & the socio-economical sustainability of the income-generating ventures.
- Partnership investigation:
  - It is envisaged that this enterprise will be managed as part of the GLTFCA in close consultation with the Government of Mozambique, the PNL and the PPF, and that the implementation framework will be similar to the support PPF provides to the Mozambican Government in the development of the PNL.
  - Appropriate forms of partnership between the local communities and the private sector will be explored by the mission team.
- Logistics:
  - Site: the mission will be carried out in the Chicualacuala area, in Gaza Province; maps will be elaborated at the office after the field trip;

- Period and duration: the mission will comprise (i) a field trip in Mozambique for approximately two week time the second half of June, & (ii) office work for reporting and mapping.
- Expertise:
  - Team work: the mission is carried out by a team of consultants; the various members of the team work together as a single team with Philippe Chardonnet as coordinator of the team; all the team members participating to the field trip contribute to the final report.
  - Expertise: the team is made of a wildlife veterinarian, a livestock veterinarian, a social scientist, an agronomist, a wildlife manager and an expert in community-based natural resource management;
  - Confidentiality: all members of the team agree to respect the confidentiality of the information collected during the mission as well as the output of the mission including all documents, reports, maps, etc, unless previous agreement of the team coordinator.

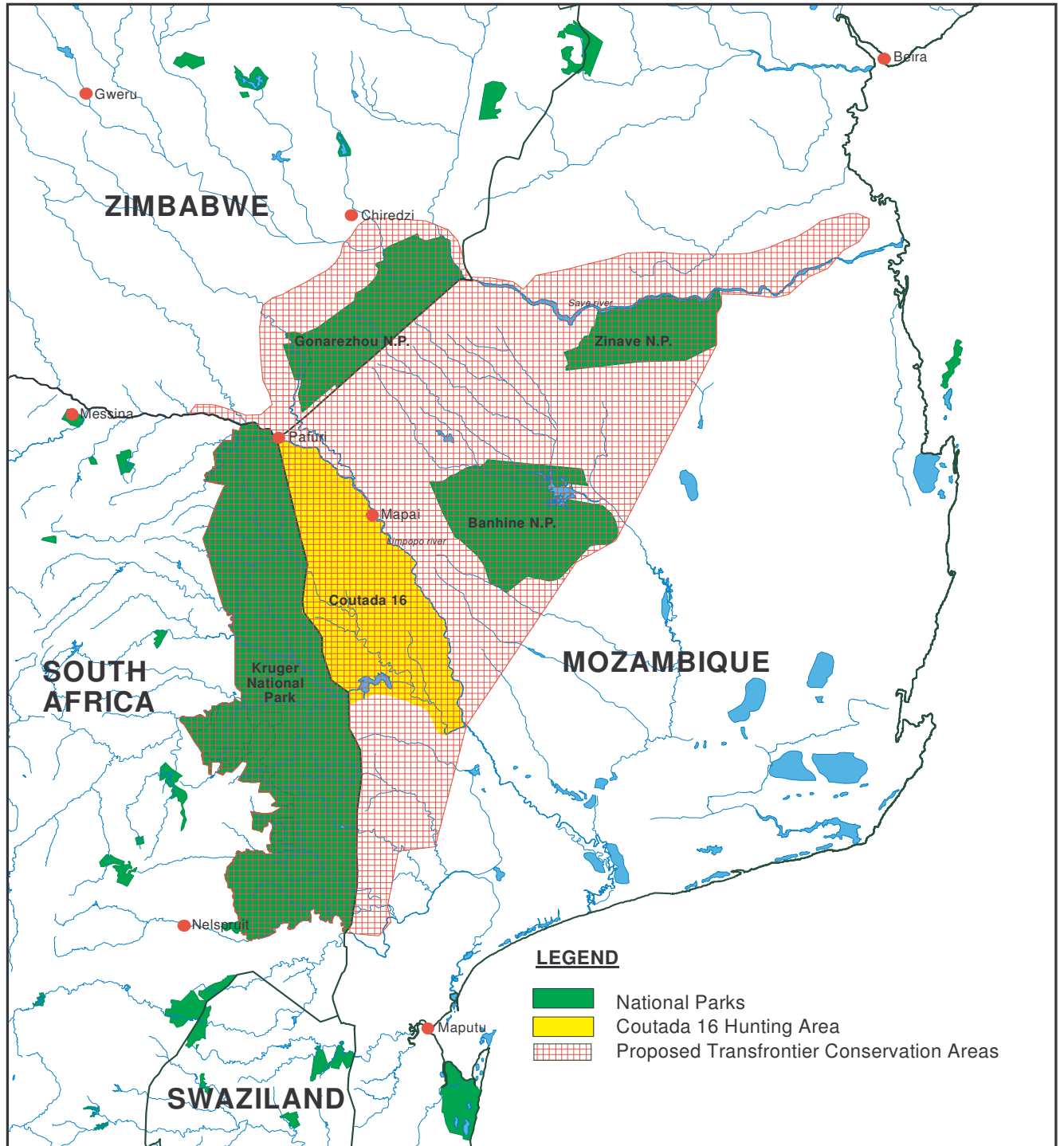
#### **4. Expected result**

---

To produce a comprehensive document in the shape of a feasibility study including maps and cost estimates.

## 2. CARTE DE SITUATION

### MAP OF GAZA TFCA



## II. CONDUITE DE LA MISSION

### 1. LISTE DES PERSONNES RENCONTREES

- Agence Française de Développement (AFD), Mozambique :
  - o Chiron Guillaume
  - o Corbier Constance
  - o Desmazières Françoise, Directrice
- Bacheré Pierre, Conseiller de Coopération et d'Action Culturelle, Ambassade de France au Mozambique
- Belinha Manleique, Chicualacuala
- Bento Carlos Manuel, Research Associate, Zambesi Basin Crane and Wetland Conservation Program, International Crane Foundation, Mozambique
- Carvalho Fernando
- Cassa Jossias, Técnico de geografia e cadastro
- Chauque Jutasse Joao
- Cuco Arlito, Director Nacional, Ministerio da Agricultura & Desenvolvimento Rural, Mozambique
- De Sousa Mateus, Jorge, Conseiller, Ambassade du Mozambique à Paris
- Dias Maximo
- Direccao Nacional de Florestas e Fauna Bravia, Ministerio da Agricultura e Desenvolvimento rural, Mozambique :
  - o Zacarias Agostinho
  - o Mansur Eduardo, Assessor Técnico Principal
  - o Foloma Marcelino, Coordenador Nacional
- Dublin Holly T., Dr., Chair Species Survival Commission, IUCN, RSA
- Feldmeier Christian, Ministère de l'Agriculture, Mozambique
- Ferrao Jorge, Ph.D., Regional Coordinator, Ministry of Tourism, Moçambique
- Garnier Julie, Maluane, The Zoological Society of London
- Gulele Sebastio, Lide Comunautario de Chale
- Henriques Rogério L., Administrador, Grupo Madal, S.A.R.L., Mozambique
- IUCN Maputo :
  - o Magane Samiro
  - o Nhantumbo Isilda
- Java Dina, Dra., Inspeccao Geral do Turismo, Ministerio do Turismo
- Laubscher Frans, FHL Project Management, Mozambique
- Leitao Ana
- Maluleke Abdul Jimo, Secretary, Mpuza
- Manent Jean-Michel, Consul Adjoint, Ambassade de France au Mozambique
- Manguane Jossias
- Matos Ceu Nora, Directora Provincia de Turismo de Gaza
- Motta Helena, Country Coordinator, WWF Mozambique
- Nhanala Manuel, Veterinary Chief Services
- Nhantombo Isilda
- Natividade Manuela, Senior Sales Officer, MTSL, Mozambique
- Peace Parks Foundation, RSA :
  - o Beech Craig, GIS Manager
  - o de Kock Melissa, Project Coordinator
  - o Myburgh Werner, Project Manager

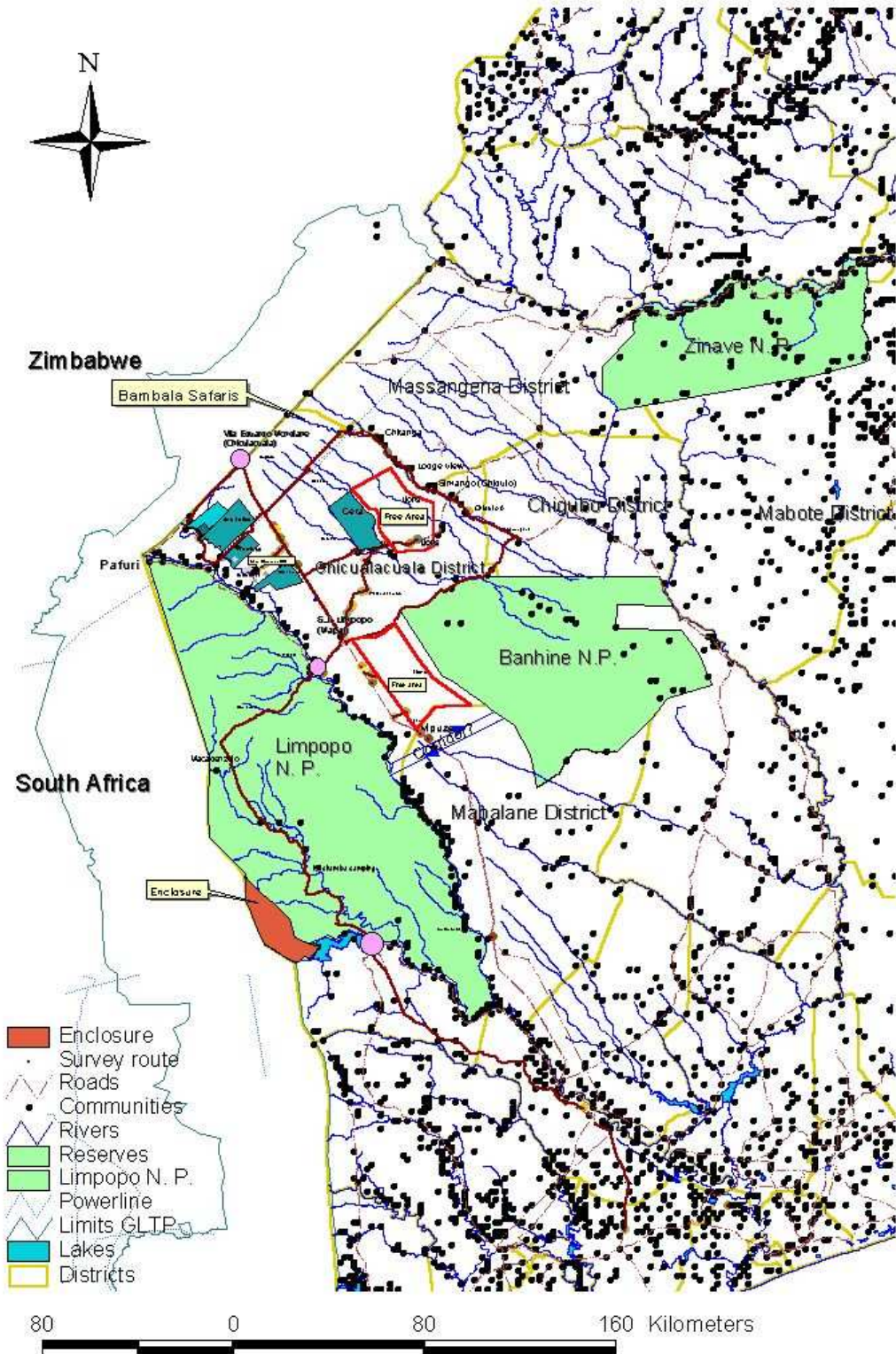
- Pereira Cabral Augusto, Director, Museu de Historia Natural, Mozambique
- Raposo Celestino, Director da Agricultura de Chicualacuala
- Roque Silva Samuel, Administrador de Chicualacuala
- Sitol Joaquim
- Soto Bartolomeu
- Sumbana Zacarias T., Secretario, Fundo Nacional do Turismo, Mozambique
- Usman Mussa, Director Adjunto, Centro de Promoção de Investimentos, Mozambique
- Van Wyk Arrie, Parque Nacional do Limpopo, Direccao Nacional de areas de Conservacao, Ministerio do Turismo

## 2. PROGRAMME DE LA MISSION

Thursday 16	Maputo	Arrival from Paris via Joburg
Friday 17	Maputo	Meeting with MITUR
Saturday 18	Maputo	Meeting with TFCA Meeting with Ana Leitao & lawyer Maximo Dias
Sunday 19	Maputo	Meeting with TFCA
Monday 20	Xai-Xai	Meeting with Prov. Dir. of Tourism Meeting with Prov. Dir of Agriculture
Tuesday 21	Massingir	Meeting with PNL
Wednesday 22	Chicualacuala	Travelling to Chicualacuala
Thursday 23	Chicualacuala	Meeting with DA and local authorities
Friday 24	Chicualacuala	Site assessment
Saturday 25	Chicualacuala	Site assessment
Sunday 26	Chicualacuala	Site assessment
Monday 27	Chicualacuala	Site assessment
Tuesday 28	Chicualacuala	Site assessment Meeting with Ana Leitao & lawyer Maximo Dias
Wednesday 29	Chicualacuala	Debriefing with B. Otto
Friday 30	Maputo	Travelling back to Maputo & Harare
Saturday		
Sunday		
Monday		<i>À compléter</i>
Tuesday		

### III. RESULTATS

#### 1. CARTE DE SITUATION DU PROJET LIMPOPO



## 2. COMPARAISON DES SITES PAR L'EQUIPE DE LA MISSION

CRITERIA		Site A Ana Leitão	Site B Banhine	Site C Chefu
<b>Geographical set up</b>	Accessibility	3	5	3
	Size	2	4	4
	Shape	2	5	4
	Relief	5	1	2
	Rivers	4	1	3
<b>Natural resources</b>	Soil quality	4	3	2
	Vegetation	3	3	3
	Wildlife presence	1	2	3
	Surface water	1	1	1
	Underground water	4	2	3
<b>Aptitude to development</b>	Administrative procedure	4	3	2
	Scenery landscape	3	2	3
	Proximity to tourism route	3	5	2
	Suitability for fencing	1	5	3
	Suitability to road opening	1	5	3
	Negotiation with communities	3	3	1
	Sport hunting suitability	3	4	5
	Suitability for game meat prod	.	5	4
	Potential for game restauration	1	3	4
	Suitability for restocking	2	3	4
<b>Social issues</b>	Human population	2	4	3
	Agriculture encroachment	4	4	4
	Grazing pressure	3	3	2
	Logging for domestic uses	4	2	3
	Commercial logging	4	1	3
	Charcoal	4	2	3
	Hunting for domestic use	3	1	2
	Commercial poaching	3	1	2
	Thatching grass	1	1	1
	Fruits & roots collection	2	2	2
	Rituals	2	2	2
Potential conflicts	2	3	1	
<b>Conservation role</b>	TFCA	1	4	3
	Conservation of habitats			
<b>Security</b>	Land mines	1	5	2
	General security	2	1	3
<b>TOTAL</b>		<b>88</b>	<b>101</b>	<b>95</b>

### 3. COMPTE-RENDUS DES EXPERTS

#### 3.1. REPORT OF A LIMPOPO FESABILITY STUDY

by the BIOHUB team

Tuesday, June 28, 2005

- Water component
  - ❖ Major pb for rural development
  - ❖ Water table not deep (5-15 meters) except in Mapai (70 m??)
  - ❖ Source of conflicts
  - ❖ Tool for game management >>> reduce fencing investment
    - Necessity a hydrological survey
    - Require drilling equipment from SA
  
- Community component
  - ❖ High expectation in water supply and rural development
  - ❖ Small villages with a few households
  - ❖ Skated population along rivers and roads
  - ❖ Small herds of cattle >> dynamic of capitalization rather than commercial trade
  - ❖ Traditional crop production for self consumption
  - ❖ Pb of level of production
  - ❖ No cash crop production
    - Necessity of conducting a good livelihood assessment (3-4 weeks)
  
- Ranching component
  - ❖ 5.000 ha as a core area for restocking
  - ❖ plain game: sable, buffalo etc..
  - ❖ multi purpose utilization: game meat, sport hunting, tourism, life animal trade
  - ❖ 100.000 ha surrounding by a double cattle // buffalo fence
    - FS of establishment of the 100.000 ha and 5.000 ha core area (One month)
      - Accessible
      - Attractive
      - Easy to manage
      - Good permanent pan
    - More spatial information (Spot image, aerial survey etc)
  
- Tourism component
  - ❖ Mapai focal point
  - ❖ SA tourism to Vilanculos 440 km from Vilanculos
  - ❖ Safari train
  
- Training education component

- ❖ Secondary school in Mapai
- ❖ Wildlife center for training (SADC and French wildlife vet)
- ❖ Wildlife vet unit training center (TFCA)

Site	Location	Size	Advantages	Disadvantages
A: Ana L;	Between Munedzi river and railway	22.000 ha	More diverse landscape Diverse vegetation Close to Chicualacuala town High carrying capacity close to the river bank No agriculture activities inside	Social pressure Agriculture pressure Small area High power line spoiling the view Old building No game No road inside Pb of access during the rainy season in the lower part of the ranch
B: Massotcha	West side of Bahine NP	100.000 ha	Large area in one block Close to Mapai Close to a tourism road Close to the railway (railway tourism) Mixed vegetation Open pans Untouched vegetation except for logging Adjacent to a national park Settle only on the edges of the area (5 km boundary) Attractive vegetation Open mind communities More rainfalls than in Chicualacuala area Less sandy Management of game by water	No permanent surface water Absent of game Poaching evidence Featureless land Community driven mind by extractive strategies (poaching, NR etc)
C: 3 Fevereiro	Between Guluzo river and Chefu river	90.000 ha	Light social pressure along the Guluzo river Mixed vegetation Size of the area	Difficult to access (crossing river) Far away from tourism route No evidence of game Little access to water
			Wildlife area Many Mopane Lions seen in this area See some small antelopes	Poaching No water Dry pan
	Chefu via the power line		Nice piece of forest 17 km along the Chefu river free of settlement	People and cattle Poaching in the corridor Pb agri product

	Village: Matande Another village 3 Feirero		Talks about Kudu, Elan, Nyala, Lion, Elephant Chefu river: about 1 meter deep and 30 meters wide Good access from Vilanculos road Some spots are quite scenery >> type of corridor utilized by wildlife	Pb of potential claim for land from people coming from 3 Feireiro village A lot of cattle around place which are nice
--	--	--	--	--

### 3.2. REPORTBACK ON THE FIELD TRIP TO THE GAZA PROVINCE OF MOCAMBIQUE, 26<sup>th</sup> June to 1<sup>st</sup> July 2005,

by Mike La Grange

- **Task**

My specific brief was to advise on the suitability of the three areas chosen for sustained wildlife production. This included the evaluation of the wildlife found in each of the three proposed hunting areas. Check on the suitability of vegetation found there for ranching wildlife on a sustainable basis and determine which of the three would prove the most viable. Prospects for future translocation were examined in respect to accessibility for road transport from Zimbabwe, game species, fencing required and where suitable breeding stock could be brought in from to comply with veterinary restrictions pertaining to the province.

- **Areas examined**

The three areas examined were the area adjacent and to the north of the Limpopo to near the Maputu railway link from Zimbabwe. Secondly, an area to the southwest of Banhine Nat Park to the same rail link and thirdly an area around Chief Chefu between Banhine and Gone-re-Zhou Nat Park in Zimbabwe.

- **Findings**

All three areas were similar in many respects, featureless with vegetation comprising of typical low lying open savannah bush veldt interspersed with combretum and iron wood thickets, ideal for wildlife. Of major concern was the absence of standing water, which has severely limited wildlife being resident there, possibly only transiting through them during the wet season. Several large dry pans were visited most of which probably retained water for most of the year during the wetter seasons but now are depleted by cattle. It is probable that it is this factor of standing water necessary for cattle that limits their numbers so that any improvement on water supplies, necessary to sustain wildlife, would result immediately in a corresponding increase of domesticated stock competing for the resource. In all three areas very little sign of wildlife even the non-game nocturnal species was noted. Little spoor was noted on paths and several cases of rampant poaching seen. Evidence of wide spread illegal commercial hardwood harvesting was

seen particularly *Azelia quanzensis* (Pod mahogany), often linked with poaching. There seems to be a general lack of understanding amongst the local population of the concept of sustainable wildlife use and conservation requiring education before any wildlife venture could be implemented. Perhaps consideration should be given to funding a smaller property fully stocked specifically to provide an example and to educate all spectrums of society in Mozambique on the potential for wildlife.

Land policy favouring agriculture in respect to livestock production very soon would compete with the project despite guarantees and developing facilities for local villagers outside the project area.

The road network from Zimbabwe generally is considered good with the possible exception to the west of the Chefu area where heavy sands may prove to be a problem for large trucks transporting game in.

In conclusion all three areas have potential from a wildlife perspective provided that

- Water could be pumped into pans and other artificial water points.
- The politics and competition for water may be resolved permanently.
- Access to the wildlife area by people and cattle be limited and controlled.
- The villagers are educated as to the importance of wildlife to them and the nation as a whole used on a sustainable basis.

Considering these factors, it was determined by all members of the team that other more suitable areas be sought for investment.

Consideration was given for the stocking of a core fenced area of 10 000 hectares providing recommendations in regard to species and numbers in a separate report.

### **3.3. CIRAD/WWF CHICUALACUALA DISTRICT, MOZAMBIQUE FIELD TRIP REPORT**

by Fortune Shonhiwa

**Programme Officer, Miombo Ecoregion Conservation Programme, WWF – Southern Africa Regional Programme Office.**



**WWF** *for a living planet*®

The Mission was undertaken from 21 June to 1 July 2005. My understanding was that there was an opportunity for WWF to partner with CIRAD in working on private sector-community partnerships between the communities of Chicualacuala District and the Rosschild Foundation for the conservation of natural resources of that area. Two staff members of CIRAD and myself left for Mozambique and once we were there the project coordinator, two veterinarians, two district technicians and a wildlife translocation specialist joined us. After discussions at the district administrative offices, the team then spent about six days investigating a suitable area that could be used to translocate wild animals into and possibly link this with safari hunting, game meat harvesting and other tourism developments such as camping and lodges. The

understanding was that the investor wanted a concession of 100 000 hectares of land for this project.

After the investigations the team evaluated the observations from three possible choices. The representative/the investor joined the team at the end of the investigations, was presented with the results and made his decision. The original plan had been a private concession of 23 000 ha which the investor had previously identified and the mission was to see if this area could be expanded to 100 000 ha. This option proved not suitable due to several reasons, the main ones being that there were already other concessions surrounding that piece of land and that the community across the Mwenezi River was too large, had too many cattle that would bring in a livestock/wildlife disease interface that would be a problem to deal with and the community used the identified concession as a hunting area.

The second option would not work for the investor either, because he felt that this area being close to the main road and the railway line was too exposed to commercial hunting by the communities as they had easy access to markets. The third and final choice did not work either because the size of the population surrounding and within this area proved to be too big. The unoccupied 90 000 ha available in that area was actually the communities' traditional hunting grounds as its tied in with the corridor for animals moving between Gonarezhou and Banhine National Parks. The communities have settled along the rivers, as water is very scarce in the whole district. Due to the scarcity of water they harvest very little and they rely heavily on the forest for wildlife, wild fruits and tubers for their survival particularly during drought years. The district is extremely under-developed and lack infrastructure such as boreholes, basic school buildings, clinics, good roads, etc. As they are livestock owners and they have a relatively high number of cattle, goats and sheep, again there was the issue of disease transfer between livestock and wildlife such as foot-and-mouth and corridor disease. The conclusion from the investor was that he would not be able to meet the expectations of the people in these circumstances and was concerned with the livestock/wildlife interface and the level of hunting pressure that would come from the communities.

Opportunities for WWF-CIRAD Consortium involvement in conservation of natural resources in Chicualacuala District:

The area has some almost pristine/barely touched Combretum/Terminalia woodlands with stands of ironwood and mopane interspaced within. The woodlands have a very good grass layer. Because of the sparse human population, relatively low livestock numbers, depleted wildlife numbers and the scarcity of water there are areas of up to 90 000 ha that are unsettled and are in this state of minimum disturbance. What was interesting to me is that these uninhabited areas are also the corridors for movement of animals between Gonarezhou and Banhine National Parks or between the Limpopo River and Banhine National Park. The communities recognize them as the wildlife sanctuaries where they go and do their hunting but otherwise leave them undisturbed. The communities put a very high value to the presence of wildlife and other natural resources such as fruits and tubers as part and parcel of their livelihoods.

With this background, of a community which already have conservation practices and wildlife sanctuaries in place and which put a very high value in their natural resources, there can be an opportunity for WWF to do conservation and livelihood improvement projects in this area. This is also an area within the Greater Limpopo TransFrontier Park and the conservation results particularly to do with protection of identified wildlife corridors would contribute to the broader objectives of the Transfrontier initiative.

#### 4. CONCLUSION DE LA MISSION

- **La mission exploratoire s'est déroulée dans de très bonnes conditions et a reçu un excellent accueil des autorités à tous les niveaux :**

- Central : le Gouvernement a réservé un excellent accueil à la mission. Son Excellence Monsieur le Ministre du Tourisme de la République du Mozambique a accordé une audience à la mission et bien voulu faciliter son déroulement sur le terrain.

- Provincial : le Gouvernement Provincial de Gaza a bien voulu recevoir la mission à Xai Xai et a grandement facilité son déroulement dans le District de Chicualacuala

- District : l'Administration du District, et particulièrement son Administrateur et ses différents services techniques, n'ont pas ménagé leurs efforts pour le bon déroulement de la mission.

- Local : partout où la mission a été amenée à se déplacer, elle a rencontré un excellent accueil auprès des autorités des villages et auprès des populations locales.

- **La mission a été conduite par une équipe pluridisciplinaire constituée :**

- d'experts des différentes disciplines concernées par le projet : conservation, développement, géographie, écologie, sociologie, biologie, etc.

- de représentants des autorités locales : après avoir consulté les autorités Centrales, Provinciales et du District, la mission a effectué toutes ses visites de terrain en collaboration étroite avec des techniciens des services de l'agriculture et en particulier du cadastre, de l'élevage et des eaux et forêts.

- **La mission a exploré les situations favorables à l'implantation d'un nouveau projet dans la zone qui lui avait été indiquée :**

- les sites préalablement identifiés ont fait l'objet des investigations nécessaires.

- d'autres sites repérés au cours de la mission ont été explorés.

- 3 sites spécifiques ont fait l'objet d'investigations particulières en raison de leur intérêt pour l'implantation du projet.

- **Les paramètres importants pour l'implantation d'un projet ont été évalués dans chacun des 3 sites explorés :**

- les aspects humains : dans leurs composantes socio-économiques, culturelles, modes d'utilisation des terres et des ressources naturelles, etc.

- les aspects écologiques : dans leurs composantes paysage, hydrographie, relief, sol, végétation, faune, transformations induites par l'homme, etc.

- les aspects administratifs, institutionnels, légaux, réglementaires, fonciers, etc.

- **Les perspectives d'implantation d'un projet ont été évaluées, discutées et réévaluées avec l'ensemble des parties prenantes pour aboutir à des conclusions consensuelles au niveau de la mission :**

- la région préalablement identifiée présente des atouts favorables indéniables en matière de conservation et de développement,

- cette région connaît une forte dynamique de peuplement, évidemment accompagnée d'une volonté parallèle de développement socio-économique en rapport avec les implantations humaines,

- la vocation de cette région se transforme au fur et à mesure des implantations :

- . l'emprise agricole intéresse les meilleures terres en particulier les alluvions aux abords des cours d'eau,

- . l'emprise pastorale gagne les terres "libres" non occupées par l'agriculture, souvent aux dépens des habitats naturels sauvages,

- . l'exploitation de la forêt prend de l'ampleur, que ce soit le bois de valeur exportable ou les produits forestiers non ligneux,

- la faune sauvage est une ressource importante pour les populations qui l'utilisent comme un appoint alimentaire crucial dans certaines circonstances, notamment en périodes de soudure alimentaire ou de difficultés particulières,

- l'implantation d'un nouveau projet dans cette région présente à la fois :

- . des potentialités de développement pour les populations locales,

- . des opportunités de conservation des ressources naturelles,

- . des risques de concurrence avec les impératifs de développement des populations locales.

- l'implantation d'un projet de nature innovante est considérée comme une entreprise de longue haleine qui nécessite une approche pluridisciplinaire très complète, une telle démarche est perçue comme relativement lourde et dépasse les intentions initiales de la mission,

- un projet bien adapté à cette région mérite une étude plus complète et plus fine pour répondre aux exigences du contexte; un projet de plus grande envergure doit être envisagé, notamment dans le cadre plus global de TFCA.

<b>ANNEXES</b>
----------------

**GAME/LIMPOPO**

<b>Game</b>	<b>Number</b>	<b>Unit price</b>		<b>Translocation</b>	<b>Transport</b>	
Elephant	20	400	8 000	250	80	6 600
Buffalo	50	1 000	50 000	150	25	8 750
Giraffe	20	2 200	44 000	200	50	5 000
Livingstone Eland	50	1 000	50 000	100	25	6 250
Kudu	50	300	15 000	100	40	7 000
Nyala	50	1 000	50 000	100	16	5 800
Roan	20	23 700	474 000	250	20	5 400
Sable	50	9 800	490 000	200	20	11 000
Zebra	100	730	73 000	100	25	12 500
Tsessebe	50	3 000	150 000	100	27	6 333
Waterbuck	50	790	39 500	150	27	8 833
Wildebeest	150	260	39 000	100	17	17 609
Bushbuck	30	390	11 700	50	20	2 100
Impala	500	100	50 000	50	9	29 444
Black rhino	10	35 000	350 000	250	200	4 500
White rhino	20	18 000	360 000	250	200	9 000
Warthog	200	114	22 800	25	8	6 600
Lichtenstein hartebeest	20	10 000	200 000	250	20	5 400
<b>Total</b>			<b>2 477 000</b>			<b>158 120</b>